



**2011/2012 SEASON**

SCOTTISH BALLE

THE JOFFREY BALLE

EVIDENCE, A DANCE COMPANY

BALLE

BALLE

BOLSHOI BALLE

GLORYA KAUFMAN PRESENTS  
**dance**   
at the music center



MUSIC · CENTER

135 North Grand Avenue  
Los Angeles, CA 90012

Nonprofit  
Organization  
U.S. Postage  
PAID  
Los Angeles, CA  
Permit No.  
33380

Front cover: Hélène Bourbonillon in Ballet du Grand Théâtre de Genève's *Dov'è la luna*. Photo by GTG/Gregory Batardon.  
Back cover: Ballet du Grand Théâtre de Genève's *Romeo and Juliette*. Photo by GTG/Gregory Batardon.

**2011/2012 SEASON**

REVEL IN THE BEAUTY

GLORYA KAUFMAN PRESENTS  
**dance**   
at the music center



WATCH AS BEAUTY UNFOLDS  
BEFORE YOUR EYES WITH THE  
NINTH SEASON OF **GLORYA  
KAUFMAN PRESENTS DANCE**  
AT THE MUSIC CENTER.

From masterpieces and undiscovered jewels, to dance that pushes the boundary of the art form itself, the 2011/2012 season will celebrate the artistry of today's most illustrious dance companies from around the globe.

PACIFIC STANDARD  
TIME: ART IN LA  
1945-1980 (PST)

**Diavolo Dance Theater**  
**NOVEMBER 12 - 14, 2011**  
MUSIC CENTER PLAZA

The Music Center is thrilled to participate in *Pacific Standard Time: Art in LA 1945-1980 (PST)*, an incredible collaboration where more than 60 cultural institutions from across Southern California will celebrate the birth of the LA art scene and how it became a major new force in the art world. For *Pacific Standard Time*, the Music Center will co-commission a work with Diavolo Dance Theater that is inspired by skateboard culture, a sport and an art form invented in Southern California in the 1950s. During the residency (November 12 - 14), the Music Center will share with the public the creative process through a series of FREE open rehearsals on the Music Center Plaza. Rehearsals will bring together skaters and dancers to exchange ideas and possibilities as they develop the new work.



SUBSCRIBE TODAY!

GLORYA KAUFMAN PRESENTS  
**dance**   
at the music center

Virgine Caussin and Fabrizio Clemente in Ballet Preljocaj's *Snow White*. Photo by JC Carbonne

Trajectoire, photo by Kristi Klumpp

NORTH AMERICAN PREMIERE



# SCOTTISH BALLET

OCTOBER 14 - 16, 2011 | DOROTHY CHANDLER PAVILION

REPERTORY PROGRAM TO INCLUDE:

*Song of the Earth* CHOREOGRAPHY Sir Kenneth MacMillan  
A North American Premiere CHOREOGRAPHY Jorma Elo

The season begins with a Music Center debut of **Scottish Ballet**, performing in the US for the first time in 25 years. The company tours across Scotland, the UK and abroad, performing a repertoire of classics and contemporary choreography to critical acclaim. The October performance features Sir Kenneth MacMillan's masterwork *Song of the Earth* and the North American premiere of a new commission created for the company by Boston Ballet choreographer Jorma Elo and set to music by Mozart and Steve Reich.

DanceTalks provided one hour prior to each performance.



Adam Blyde, Eve Mutso and Tama Barry in MacMillan's *Song of the Earth*. Photo by Graham Wylie.

SUBSCRIBE TODAY!



Victoria Jajani and Fabrice Calmels in The Joffrey Ballet's *Nutcracker*. Photo by Herbert Wigdoli.  
Inset: Victoria Jajani and Miguel Angel Blanco in The Joffrey Ballet's *Nutcracker*. Photo by Herbert Wigdoli.

To celebrate the holidays, **The Joffrey Ballet** will bring the magic of the season with its stunning production of the *Nutcracker*. In Robert Joffrey's rendition of the classic story, dazzling costumes, contemporary choreography and an imaginative set will delight generations of dance lovers. In addition, the performance will twinkle brightly with a live performance by the LA Opera Orchestra.

DanceTalks provided one hour prior to each performance.

The Joffrey Ballet

# NUTCRACKER

DECEMBER 1 - 4, 2011 | DOROTHY CHANDLER PAVILION

The return of Robert Joffrey's *Nutcracker* with the LAOPERA Orchestra



MUSICCENTER.ORG | (213) 972-0711

WEST COAST PREMIERE



# EVIDENCE, A DANCE COMPANY

MARCH 9 - 11, 2012 | AHMANSON THEATRE

REPERTORY PROGRAM TO INCLUDE

*On Earth Together* CHOREOGRAPHY Ronald K. Brown  
set to the music of Stevie Wonder



With a distinct integration of traditional African dance and contemporary choreography, **Evidence, A Dance Company** provides audiences with a truly compelling experience that dramatically weaves together history and tradition. In March, Evidence will bring its latest work by famed director/choreographer Ronald K. Brown for a West Coast premiere of *On Earth Together* set to the music of R&B legend Stevie Wonder. Additionally, Brown's critically acclaimed *Grace*, which is also in the repertory of the Alvin Ailey® American Dance Theater, will be performed.

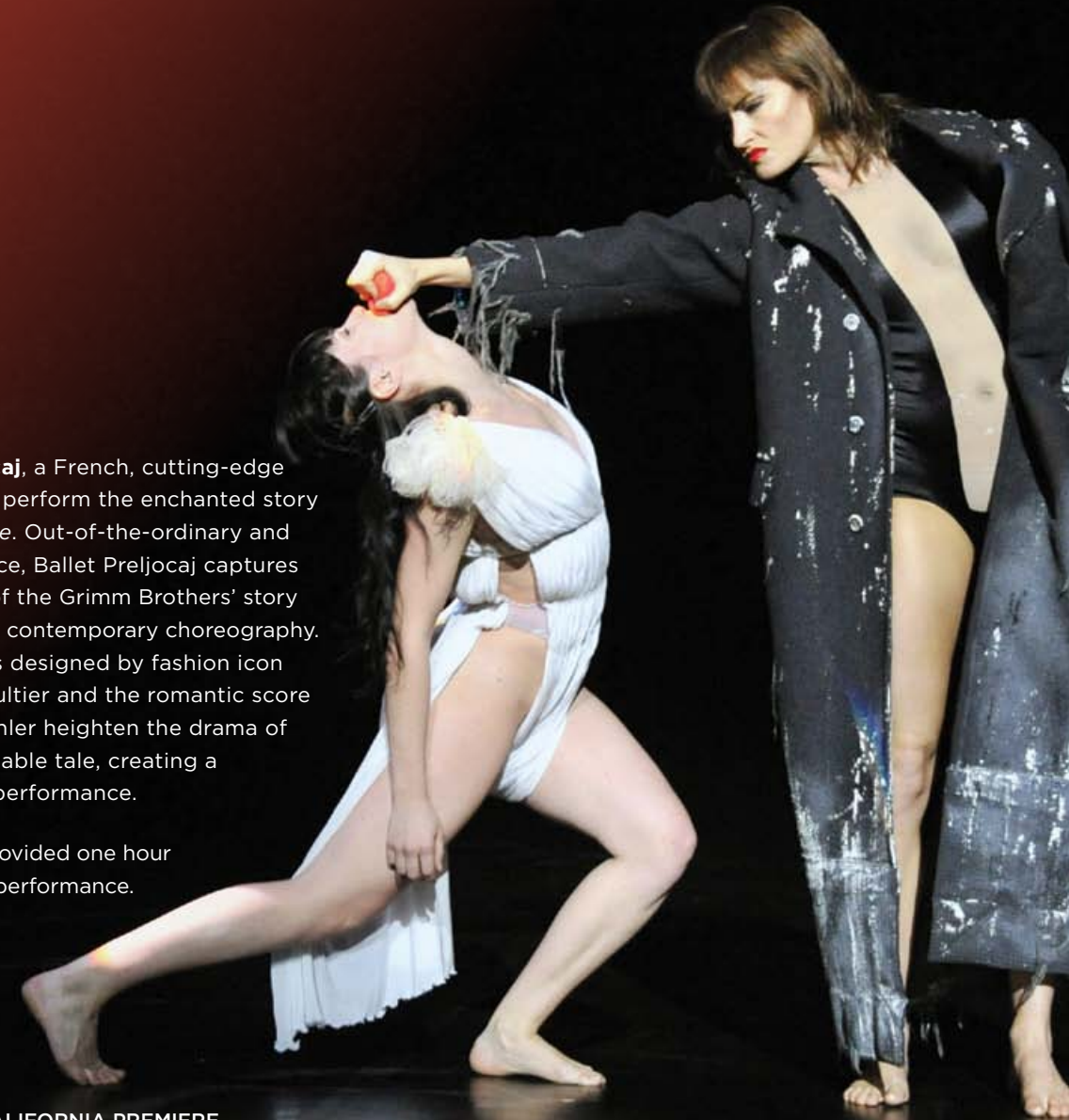
DanceTalks provided one hour prior to each performance.

Clarice Young in *Grace*. Photo by Rachel Papo.  
Inset: Ronald K. Brown, Clarice Young, Francine Ott, Otis D. Herring and Annique Roberts in *Evidence, A Dance Company's Destiny*. Photo by Julia Cervantes.

Virginie Causin and Emma Gustafsson in Ballet Preljocaj's *Snow White*. Photo by J.C. Carbonne.  
Inset: Céline Galli in Ballet Preljocaj's *Snow White*. Photo by J.C. Carbonne.

**Ballet Preljocaj**, a French, cutting-edge company will perform the enchanted story of *Snow White*. Out-of-the-ordinary and familiar at once, Ballet Preljocaj captures the essence of the Grimm Brothers' story with exquisite contemporary choreography. The costumes designed by fashion icon Jean Paul Gaultier and the romantic score of Gustav Mahler heighten the drama of this unforgettable tale, creating a spellbinding performance.

DanceTalks provided one hour prior to each performance.



SOUTHERN CALIFORNIA PREMIERE



## Ballet Preljocaj SNOW WHITE

MARCH 23 - 25, 2012 | DOROTHY CHANDLER PAVILION

*Snow White* CHOREOGRAPHY Angelin Preljocaj

SUBSCRIBE TODAY!

MUSICCENTER.ORG | (213) 972-0711

NORTH AMERICAN PREMIERES

# BALLET DU GRAND THÉÂTRE DE GENÈVE

APRIL 13 - 15, 2012 | DOROTHY CHANDLER PAVILION

REPERTORY PROGRAM TO INCLUDE

*Les Sylphides* CHOREOGRAPHY Benjamin Millepied

*Spectre de la Rose* CHOREOGRAPHY Benjamin Millepied

WITH LAOPERA Orchestra

Making their West Coast debut and performing a program with North American premieres is Ballet du Grand Théâtre de Genève. The Music Center is thrilled to bring the Swiss company that is rarely seen outside of Europe. The engagement will feature *Les Sylphides* and *Spectre de la Rose* by acclaimed New York City Ballet dancer and choreographer Benjamin Millepied, who is widely known for his work in last year's award-winning film *Black Swan*.

DanceTalks provided one hour prior to each performance.



Sarawanee Tanatanit and Nathaneal Marie in Ballet du Grand Théâtre de Genève's *Closer*. Photo by GTG/Vincent Lepresle. Inset: Ballet du Grand Théâtre de Genève's *Transit Umbra*. Photo by GTG/Vincent Lepresle.

Bolshoi Ballet's *Swan Lake*. Photo by Damir Yusupov.

## Bolshoi Ballet SWAN LAKE

JUNE 7 - 10, 2012 | DOROTHY CHANDLER PAVILION

*Swan Lake* REVISED CHOREOGRAPHY BY Yuri Grigorovich  
AFTER Marius Petipa and Lev Ivanov  
WITH LAOPERA Orchestra

To conclude a season of great beauty, the Bolshoi Ballet will perform a work that epitomizes the grandeur of classical ballet—*Swan Lake*. Originally choreographed for the Bolshoi in 1877, today's revised *Swan Lake* by Yuri Grigorovich remains a sumptuous masterpiece. The tragic legend will be performed with the LA Opera Orchestra and marks the Bolshoi's long awaited return since 2000.

DanceTalks provided one hour prior to each performance.



SUBSCRIBE TODAY!

MUSICCENTER.ORG | (213) 972-0711

## REVEL IN THE BEAUTY

### FULL SUBSCRIPTIONS

Join us at the Music Center for a season filled with stunning and inspirational dance experiences! Subscribe today to take advantage of subscriber only discounts and benefits. Full subscriptions are available until October 16, 2011.

### SINGLE TICKETS

Now is the time to watch beauty unfold before your eyes. From masterpieces and undiscovered jewels, to dance that pushes the boundary of the art form itself, this season will celebrate the artistry of today's most illustrious dance companies from around the globe.

### FLEX SUBSCRIPTIONS

Flex Subscriptions are a great way to create your own subscription with at least three different companies and still receive exclusive low-cost ticket exchange privileges. Flex subscriptions are available until March 25, 2012.

### BUY TICKETS

ONLINE: [musiccenter.org/dance1112](http://musiccenter.org/dance1112)

CALL: (213) 972-0711

MAIL: **Dorothy Chandler Pavilion Box Office**  
135 N. Grand Avenue,  
Los Angeles, CA 90012  
(for full/flex subscription orders only)

FAX: (213) 972-7670

(for full/flex subscription orders only)

Programs, dates & artists subject to change. No late seating. No refunds. Full & Flex Subscribers may exchange within the same engagement for a \$5 per ticket fee.

# 2011 | 2012 FULL/FLEX SUBSCRIPTION ORDER FORM

## 1 SELECT YOUR SERIES SUBSCRIPTION AND SECTION

Circle your choice of section and indicate which series subscription type: Opening Night, Friday Night, Saturday Night or Sunday Matinee

SECTIONS	A	B/C	D	E/F	G	H	I	SERIES	# OF TIX	PRICE
Subscription Prices (applies to all series)	634.50	526.50	472.50	391.50	337.50	213	168		x	= \$

SUBSCRIPTION TICKET SUBTOTAL =

= \$100.00

## 2 SUGGESTED CONTRIBUTION

Your subscription contribution entitles you to special benefits and privileges.

## 3 FLEX SUBSCRIPTION ORDER/FULL SUBSCRIPTION ADDITIONAL SINGLE TICKET ORDER

Circle your choice of section, select events from 1-23 from the performance schedule to the left and indicate your choice.

### FLEX AND REGULAR SINGLE TICKET PRICES/FULL SUBSCRIBER SINGLE TICKET DISCOUNT PRICES

SECTIONS	A	B/C	D	E/F	G	H	I	EVENT #	# OF TIX	PRICE
Scottish Ballet	\$ 110/99	90/81	85/76.50	70/63	60/54	37/33.50	28/25.50		x	= \$
The Joffrey Ballet - <i>Nutcracker</i>	\$125/112.50	105/94.50	90/81	75/67.50	65/58.50	42/37.50	34/30.50		x	= \$
Evidence, A Dance Company	\$ 110/99	90/81	85/76.50	70/63	60/54	37/33.50	28/25.50		x	= \$
Ballet Preljocaj - <i>Snow White</i>	\$ 110/99	90/81	85/76.50	70/63	60/54	37/33.50	28/25.50		x	= \$
Ballet du Grand Théâtre de Genève	\$125/112.50	105/94.50	90/81	75/67.50	65/58.50	42/37.50	34/30.50		x	= \$
Bolshoi Ballet - <i>Swan Lake</i>	\$125/112.50	105/94.50	90/81	75/67.50	65/58.50	42/37.50	34/30.50		x	= \$

FLEX/SINGLE TICKET SUBTOTAL =

HANDLING FEE = \$20.00

GRAND TOTAL =

My check is enclosed, payable to MUSIC CENTER

Please charge my:  VISA  MC  
 AMEX  DISCOVER

CARD #

FIRST NAME LAST NAME

EXP. DATE CVC #

ADDRESS

CARDHOLDER NAME

CITY STATE ZIP

SIGNATURE

DAYTIME PHONE # EVENING PHONE #

E-MAIL

**IMPORTANT INFORMATION:** Checks will be deposited immediately and credit cards charged for the full value of your first choice seats. If your guaranteed seat assignment is your second choice, we will automatically process any refund. If requested price is not available, the next price down will be assigned. Information is correct at time of printing. Repertoire, artists and schedule subject to change. All sales final, no refunds. Please call (213) 972-0711 for updated availability.

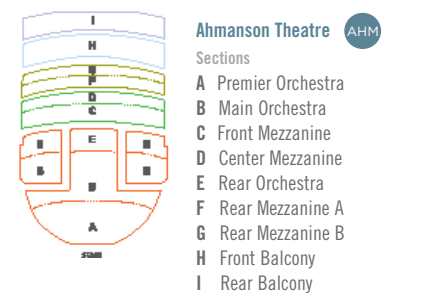
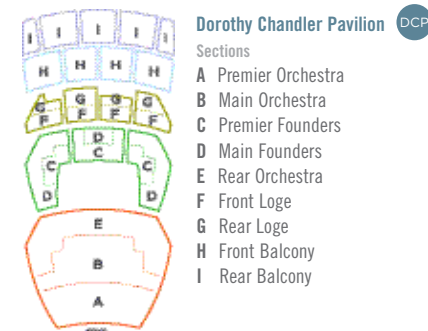
GLORYA KAUFMAN PRESENTS  
**dance** at the music center

## GROUPS OF 10 OR MORE RECEIVE:

- 20% off single ticket prices.
- Easy payment options.
- Two complimentary tickets with the purchase of 50 or more tickets for an individual group reservation.
- Opportunity for a pre-performance presentation about dance, the dance companies and works to be performed.

For group sales information, call (213) 972-8555, email [mccgroupsales@musiccenter.org](mailto:mccgroupsales@musiccenter.org) or visit [musiccenter.org](http://musiccenter.org).

## SEATING CHARTS



## 2011/2012 SEASON PERFORMANCE SCHEDULE

### SCOTTISH BALLET

- FRIDAY, OCTOBER 14, 2011 7:30 P.M.
- SATURDAY, OCTOBER 15, 2011 7:30 P.M.
- SUNDAY, OCTOBER 16, 2011 2:00 P.M.

### EVIDENCE, A DANCE COMPANY

- FRIDAY, MARCH 9, 2012 7:30 P.M.
- SATURDAY, MARCH 10, 2012 7:30 P.M.
- SUNDAY, MARCH 11, 2012 2:00 P.M.

### BALLET DU GRAND THÉÂTRE DE GENÈVE

- FRIDAY, APRIL 13, 2012 7:30 P.M.
- SATURDAY, APRIL 14, 2012 7:30 P.M.
- SUNDAY, APRIL 15, 2012 2:00 P.M.

### THE JOFFREY BALLET

#### *Nutcracker*

- THURSDAY, DECEMBER 1, 2011 7:30 P.M.
- FRIDAY, DECEMBER 2, 2011 2:00 P.M.
- FRIDAY, DECEMBER 2, 2011 7:30 P.M.
- SATURDAY, DECEMBER 3, 2011 2:00 P.M.
- SATURDAY, DECEMBER 3, 2011 7:30 P.M.
- SUNDAY, DECEMBER 4, 2011 2:00 P.M.

### BALLET PRELJOCAJ *Snow White*

- FRIDAY, MARCH 23, 2012 7:30 P.M.
- SATURDAY, MARCH 24, 2012 7:30 P.M.
- SUNDAY, MARCH 25, 2012 2:00 P.M.

### BOLSHOI BALLET *Swan Lake*

- THURSDAY, JUNE 7, 2012 7:30 P.M.
- FRIDAY, JUNE 8, 2012 7:30 P.M.
- SATURDAY, JUNE 9, 2012 2:00 P.M.
- SATURDAY, JUNE 9, 2012 7:30 P.M.
- SUNDAY, JUNE 10, 2012 2:00 P.M.

## 2011/2012 SEASON SUBSCRIPTION PACKAGES

ENGAGEMENT	OPENING NIGHT SERIES	FRIDAY NIGHT SERIES	SATURDAY NIGHT SERIES	SUNDAY MATINEE SERIES
Scottish Ballet	Oct 14, 2011 7:30 PM (FRIDAY)	Oct 14, 2011 7:30 PM	Oct 15, 2011 7:30 PM	Oct 16, 2011 2:00 PM
The Joffrey Ballet - <i>Nutcracker</i>	Dec 1, 2011 7:30 PM (THURSDAY)	Dec 2, 2011 7:30 PM	Dec 3, 2011 7:30 PM	Dec 4, 2011 2:00 PM
Evidence, A Dance Company	Mar 9, 2012 7:30 PM (FRIDAY)	Mar 9, 2012 7:30 PM	Mar 10, 2012 7:30 PM	Mar 11, 2012 2:00 PM
Ballet Preljocaj - <i>Snow White</i>	Mar 23, 2012 7:30 PM (FRIDAY)	Mar 23, 2012 7:30 PM	Mar 24, 2012 7:30 PM	Mar 25, 2012 2:00 PM
Ballet du Grand Théâtre de Genève	April 13, 2012 7:30 PM (FRIDAY)	April 13, 2012 7:30 PM	April 14, 2012 7:30 PM	April 15, 2012 2:00 PM
Bolshoi Ballet - <i>Swan Lake</i>	June 7, 2012 7:30 PM (THURSDAY)	June 8, 2012 7:30 PM	June 9, 2012 7:30 PM	June 10, 2012 2:00 PM

Join us online:

[musiccenterla](http://musiccenterla) @musiccenterla

## Support Dance

MUSIC CENTER *annual fund*

With ticket income covering approximately 50% of presenting costs, your Annual Fund gift supports our phenomenal 2011/2012 dance season as well as our important dance outreach that includes open rehearsals, pre/post performance talks, master classes, student performances and movement workshops with visiting artists. In addition, your support provides over 60 free community events and help the Music Center deliver its nationally-recognized education programs that reach an average of 200,000 students, parents and teachers annually. Call (213) 972-4349 or visit [musiccenter.org/support](http://musiccenter.org/support) for more details.

### Center Dance Arts.

founding supporter of *Glorya Kaufman Presents Dance at the Music Center* (KDMC), directs its efforts exclusively to KDMC and offers unique opportunities to enhance member's dance experiences. For more information, visit [musiccenter.org/centerdancearts](http://musiccenter.org/centerdancearts).

### DanceTalks

take place one hour prior to every performance and offer behind-the-scenes insight designed to enhance the audience experience.

#### NEW! DanceTalks via phone!

Can't get to the theatre in time to attend the pre-performance lecture? Now you can listen from your phone. Patrons can access all talks with the following phone number and code:\*

PHONE NUMBER: (213) 342-3000 • ACCESS CODE: 7293672#

\*Restrictions apply. Visit [musiccenter.org](http://musiccenter.org) for more details.

## 2011/2012 SEASON

SCOTTISH BALLET

THE JOFFREY BALLET - *Nutcracker*

EVIDENCE, A DANCE COMPANY

BALLET PRELJOCAJ - *Snow White*

BALLET DU GRAND THÉÂTRE DE GENÈVE

BOLSHOI BALLET - *Swan Lake*

GLORYA KAUFMAN PRESENTS  
**dance**  
at the music center



MUSIC CENTER

135 North Grand Avenue  
Los Angeles, CA 90012

Nonprofit  
Organization  
U.S. Postage  
PAID  
Los Angeles, CA  
Permit No.  
33380



Front cover: Hélène Bourbonillon in Ballet du Grand Théâtre de Genève's *Doyle la luna*. Photo by GTG/Gregory Bataridon.  
Back cover: Ballet du Grand Théâtre de Genève's *Romeo and Juliette*. Photo by GTG/Gregory Bataridon.